

Agenda Summary Report (ASR)

Franklin County Board of Commissioners

DATE SUBMITTED: April 14, 2023	PREPARED BY: Michael Morgan & Suleima Wallwin
Meeting Date Requested: 4/25/2023	PRESENTED BY:
ITEM: (Select One) <input checked="" type="checkbox"/> Consent Agenda Brought Before the Board Time needed: -	
SUBJECT: Amending and Establishing Voting Precinct Boundaries within Franklin County	
FISCAL IMPACT: None	
BACKGROUND: <p>The City of Pasco adopted ordinance 4632 and approved a revision of its district boundaries for City Council on December 5, 2022. In response to this new change in Pasco City Council districts, voting precinct boundaries in the City of Pasco must be modified to keep voting precincts wholly within a specific city council district and to minimize voting precinct splitting. Boundary changes are also being made to adjacent voting precincts to maintain contiguity between precincts, whether these precincts are within or without the City of Pasco. Each voting precinct being modified in this manner will adhere to requirements to be wholly within congressional, legislative, and county legislative districts, as per RCW 29A.16.050.</p> <p>There are a total of 54 voting precincts to be modified through this proposal and two (2) new precincts (122 and 123) to be created from parts of Precinct 45 and 50 to maintain up to 1500 registered voters in each precinct per RCW 29A.16.040. Thirty-five (35) of these precinct changes constitute a slight change in boundaries, generally along road or canal rights-of-way, that are only proposed to better align with new city council districts and would not modify a precinct's population or number of registered voters.</p>	
COORDINATION: Franklin County Auditor and Geographic Information Systems, with information provided by the Council Clerk of the City of Pasco and Pasco Geographic Information Systems.	
RECOMMENDATION: That voting precincts listed in the resolution be modified as described in boundary descriptions and maps contained herein.	
ATTACHMENTS: 4632 Ordinance – Adopting the Redistricting Plan and Amending the Pasco Municipal Code Chapter 1.15 Voting Districts.pdf Precinct Legal Descriptions 03-2023 (visible features) - Word Document, 16 pages Precinct Change Atlas - Portable Document Format, 21 map pages	
HANDLING / ROUTING: (Once document is fully executed, it will be imported into Document Manager. Please list <u>name(s)</u> of party(s) that will need a pdf.) Original: Clerk of the Board Karin Milham, Suleima Wallwin Copy: GIS, Assessor	

I certify the above information is accurate and complete.

Name: Yato Bealan Title: Auditor

FRANKLIN COUNTY RESOLUTION _____

BEFORE THE BOARD OF COMMISSIONERS FRANKLIN COUNTY, WASHINGTON

Amending and Establishing Boundaries for Precincts within Franklin County

WHEREAS, the Franklin County Board of Commissioners adopted Resolution 2022-343 on December 20, 2022, setting forth the boundary lines of voting Precincts in Franklin County; and,

WHEREAS, the Franklin County Board of Commissioners deems it to be in the best interest of Franklin County to divide, amend and establish the voting precincts within boundaries of Franklin County, Washington; and,

WHEREAS, 54 voting precincts were modified to comply with the City of Pasco recently adopted ordinance 4632; and,

WHEREAS, RCW 29A.16.040 states the maximum number of active registered voters in each precinct may in no case exceed one thousand five hundred active registered voters; and,

WHEREAS, the current number of active registered voters would exceed 1500 registered voters without modification of precincts 45 and 50; and,

WHEREAS, a portion formerly in precinct 45 is now amended into new Precinct 122, the remaining portions of former precinct 45 will remain in Precinct 45; and,

WHEREAS, a portion formerly in Precinct 50 is now amended into new Precinct 123, the remaining portions of former precinct 50 will remain as Precinct 50; and,

WHEREAS, this action is necessary due to the requirements described in RCW 29A.16.040; and,

WHEREAS, this action is necessary due to City of Pasco annexation now in effect; and,

WHEREAS, the precincts of Franklin County shall be described as shown on the attached legal description for precincts 1-21, 26-31, 36, 39-51, 55, 58, 61-63, 70, 73, 102, 106, 114, 117, 118, 122, and 123 upon the passing of this resolution; and

WHEREAS, the Board of Franklin County Commissioners constitutes the legislative authority for Franklin County and feels it is in the best interest of Franklin County to; and,

NOW, THEREFORE, BE IT RESOLVED the attached supporting documents, City Ordinances, Map, and Legal descriptions shall be made part of this resolution.

APPROVED this day of April 2023.

**BOARD OF COUNTY COMMISSIONERS
FRANKLIN COUNTY, WASHINGTON**

Chair

Chair Pro Tem

Member

ATTEST:

Clerk to the Board

ORDINANCE NO. 4632

AN ORDINANCE OF THE CITY OF PASCO, WASHINGTON, ADOPTING THE REDISTRICTING PLAN IN COMPLIANCE WITH RCW 29A.76.010 AND AMENDING CHAPTER 1.15 OF THE PASCO MUNICIPAL CODE ENTITLED "VOTING DISTRICTS".

WHEREAS, in 1965, Congress adopted the Federal Voting Rights Act as a tool to prohibit discriminatory practices in state and local elections, based on the protections provided under the Fifteenth Amendment to the Constitution; and

WHEREAS, in 2018, the Washington State Legislature adopted a state Voting Rights Act (codified in Chapter 29A.92 RCW), also intended to prohibit any voting practice or procedure that effectively impairs the equal opportunity for members of a minority group to participate in the nomination and election of candidates; and

WHEREAS, the state Voting Rights Act (Section 29A.92.050 RCW) provides for a mechanism for drawing up voting districts in cities that seeks to accomplish the purposes of the Voting Rights Act; and

WHEREAS, the City of Pasco has developed such a system of voting districts, codified in Chapter 1.15 of the Pasco Municipal Code; and

WHEREAS, in accordance with RCW 29A.76.010 Redistricting, the voting districts would need to be revised periodically as populations and demographics change at a minimum of every ten years based on the decennial census; and

WHEREAS, in accordance with RCW 29A.76.010, it is now appropriate to revise the voting districts based on the decennial census in the City of Pasco; and

WHEREAS, in developing the anticipated revision of the Pasco voting districts, the City of Pasco has hired the services of consultants to assist the City with the task of making voting district revisions – adjusting for population and demographic shifts yet keeping districts parity in line based on the requirements of RCW 29A.76.010; and

WHEREAS, in connection with such revision of the Pasco voting districts, Census Groups and Census Blocks have been apportioned to the City's identified voting districts, as shown on the Map, a copy of which is attached hereto, marked as **Exhibit A and B**, and incorporated herein by this reference.

NOW, THEREFORE, THE CITY COUNCIL OF THE CITY OF PASCO, WASHINGTON DO ORDAIN AS FOLLOWS:

Section 1. That Chapter 1.15 entitled "Voting Districts" of the Pasco Municipal Code shall be and hereby is amended to read as follows:

Chapter 1.15 VOTING DISTRICTS

Sections:

- 1.15.010 Number of districts – Equal population in each.
- 1.15.020 District one.
- 1.15.030 District two.
- 1.15.040 District three.
- 1.15.050 District four.
- 1.15.060 District five.
- 1.15.070 District six.
- 1.15.080 Election of Councilmembers and Councilmembers-at-large.
- 1.15.090 Councilmembers – Residential requirement and/or removal.
- 1.15.100 Re-establishment of district boundaries.
- 1.15.110 Annexation.
- 1.15.120 Recall petitions.
- 1.15.130 Filling vacancies.

1.15.010 Number of districts - Equal population in each.

The City is divided into six voting districts. Each district shall be as nearly equal in population as possible; compact as possible; consist of geographically contiguous area; be configured as to not favor or disfavor any racial group or political party; and to the extent feasible, coincide with the existing recognized natural boundaries so as to preserve existing communities of related and mutual interest. [Ord. 4315, 2016; Code 1970 § 1.10.010.]

1.15.020 District one.

Voting district one ~~shall encompass the area within the City of Paseo comprised of precinct numbers 5, 9, 10, 14 and 15, as those precincts are described on the maps and property descriptions on file with the Auditor of Franklin County~~ is comprised of the following Census Block Groups and Census Blocks:

(1) Block Group 530210201021; including Census Blocks 029, 030, 031, 032, 033, 034, 035, 036, 037, 038, 039, 040, 041, 042, 043, 045, 046, 047; and

(2) Block Group 530210201022; including Census Blocks 002, 003, 004, 005, 011, 012, 013, 014, 020; and

(3) Block Group 530210201023; including Census Blocks 005, 007, 015, 016, 017, 018; and

(4) Block Group 530210202021; including Census Blocks 000, 002, 004, 005, 006, 007, 008, 009, 014, 015, 016, 017; and

(5) Block Group 530210203001; including Census Blocks 000, 001, 002, 003, 004, 005, 006, 007, 008, 009, 010, 011, 012, 013, 014, 015; and

(6) Block Group 530210203002; including Census Blocks 018, 019, 020, 021, 022, 023, 024, 025, 026, 027; and

(7) Block Group 530210203003; including Census Blocks 000, 001, 002, 003, 004, 005, 006, 007, 008, 009, 010, 011, 012, 013, 014, 015, 016, 017, 018; and

(8) Block Group 530210203004; including Census Blocks 000, 001, 002, 003, 004, 005, 006, 007, 008, 009, 010; and

(9) Block Group 530210204021; including Census Blocks 000, 001, 002, 003, 004, 005, 006, 007, 012; and

(10) Block Group 530210204022; including Census Blocks 000, 001, 002, 003; and

(11) Block Group 530210205041; including Census Blocks 000, 001, 002, 003, 004, 005, 006, 007, 008, 009, 010, 011, 015, 016, 017, 018, 019, 020, 021, 022, 023, 024, 025, 026, 027, 028, 029, 030, 031, 032, 033, 034, 035, 036, 037, 038, 039, 040; and

(12) Block Group 530210205042; including Census Block 038. [Ord. 4346, 2017; Ord. 4315, 2016; Code 1970 § 1.10.020.]

1.15.030 District two.

Voting district two ~~shall encompass the area within the City of Paseo comprised of precinct numbers 2, 3, 13, 17 and 18, as those precincts are described on the maps and property descriptions on file with the Auditor of Franklin County~~ is comprised of the following Census Block Groups and Census Blocks:

(1) Block Group 530210201011; including Census Blocks 017, 022, 023, 024, 025, 026, 027, 028, 029, 030, 031, 032, 034, 035, 036, 037, 038, 039, 040, 041, 042, 043, 044, 045, 046, 047, 048, 049, 050, 051, 052, 053, 054, 055, 056, 057, 058, 059, 060, 061, 062, 063, 064, 065, 066, 067, 068, 069, 070, 071, 072, 073, 074, 075, 076, 077; and

(2) Block Group 530210201012; including Census Blocks 000, 001, 002, 003, 004, 005, 006, 007, 008, 009, 010, 011, 012, 013, 014, 015, 016, 017, 018, 019, 020, 021, 022, 023, 024, 025, 026, 027, 028, 029, 030, 031, 032, 033, 034, 035, 036, 037, 038, 039, 040, 041, 042, 043, 044, 045, 046, 047, 048; and

(3) Block Group 530210201021; including Census Blocks 018, 028; and

(4) Block Group 530210201022; including Census Blocks 000, 001, 006, 007; and

- (5) Block Group 530210201023; including Census Blocks 000, 001, 002, 003, 004, 006, 008, 009, 010, 013, 014, 019, 020, 021, 022, 023, 024; and
- (6) Block Group 530210201031; including Census Blocks 000, 001, 002, 003, 004, 005; and
- (7) Block Group 530210202011; including Census Blocks 015, 018, 019, 020, 021; and
- (8) Block Group 530210202012; including Census Blocks 011, 012, 013, 014, 015, 016, 017, 018, 019, 020; and
- (9) Block Group 530210204011; including Census Blocks 000, 001, 002, 003, 004, 005, 006, 007, 008, 009, 010, 011, 012, 013, 014, 015, 016, 017, 018, 019, 020, 021, 022, 023, 024, 025, 026, 027, 028, 029, 030, 031, 032, 033, 034, 035, 036, 037; and
- (10) Block Group 530210204032; including Census Blocks 015, 016, 017, 018, 019, 020, 021, 022, 023, 024, 025, 026, 027, 028; and
- (11) Block Group 530210204041; including Census Blocks 006, 007, 008, 013; and
- (12) Block Group 530210204042; including Census Blocks 005, 006; and
- (13) Block Group 530210205011; including Census Blocks 008, 013, 015, 016, 017, 018, 019, 020, 027, 032; and
- (14) Block Group 530210205031; including Census Blocks 000, 001, 002, 003, 004, 005, 006, 007, 008, 009, 010, 011, 012, 013, 014, 015, 016, 017, 018, 019, 020, 021, 022, 023; and
- (15) Block Group 530210205032; including Census Blocks 000, 001, 002, 011, 012, 013, 014, 015, 016, 017, 018, 019, 020, 021, 022, 023; and
- (16) Block Group 530210205033; including Census Blocks 007, 008, 009, 010, 011, 012, 013, 014, 015, 018, 019, 020, 021, 022, 023, 024, 025; and
- (17) Block Group 530210207001; including Census Blocks 197, 202, 203, 204, 205. [Ord. 4346, 2017; Ord. 4315, 2016; Code 1970 § 1.10.030.]

1.15.040 District three.

Voting district three ~~shall encompass the area within the City of Pasco comprised of precinct numbers 1, 8, 22, 23, 24, 32, 33, 34, 35, 37, 38, 39, 42, 43, 44 and 102, as those precincts are described on the maps and property descriptions on file with the Auditor of Franklin County; is~~ comprised of the following Census Block Groups and Census Blocks:

- (1) Block Group 530210201021; including Census Blocks 002, 003, 004, 005, 006, 007, 008, 009, 010, 011, 012, 013, 014, 015, 016, 017, 019, 021, 022, 023, 024, 026; and

(2) Block Group 530210203002; including Census Blocks 000, 001, 002, 003, 004, 005, 006, 007, 008, 009, 010, 011, 012, 013, 014, 015, 016, 017; and

(3) Block Group 530210205042; including Census Blocks 001, 002, 009; and

(4) Block Group 530210205043; including Census Blocks 000, 001, 002, 003, 004, 005, 006, 007, 008, 009, 010, 012, 013; and

(5) Block Group 530210206051; including Census Blocks 000, 001, 002, 003, 004, 005, 006, 007, 008, 009, 010, 011, 012, 013, 014, 015, 016, 017, 018, 019, 020, 021, 022, 023, 024, 025, 026, 027, 028, 029, 030, 031, 032, 033, 034, 035, 036, 037, 038, 039, 040, 041, 042, 043, 044, 045, 046, 047, 048, 049, 050, 051, 052, 053, 054, 055, 056, 058, 062, 063, 064; and

(6) Block Group 530210206052; including Census Blocks 025, 027, 028; and

(7) Block Group 530210206053; including Census Blocks 002, 003, 004, 005, 006, 007, 008, 009, 010, 011, 012, 013, 014, 015, 016, 017, 018, 019, 020, 021, 022, 023, 024, 025, 026, 027, 028, 029, 030, 031, 032, 033, 034, 035, 036, 037, 038, 039, 040, 041, 042, 043, 044, 045, 046, 047, 048, 049, 050; and

(8) Block Group 530210206071; including Census Blocks 000, 001, 002, 003, 004, 005, 006, 007, 008, 009, 010, 011, 012, 013, 014, 015, 016, 017, 018, 019, 020, 021, 022, 023, 024, 025, 026, 027, 028, 029, 030, 031, 032, 033, 034, 035, 036, 037, 038, 039, 040, 041; and

(9) Block Group 530210206082; including Census Blocks 069, 074; and

(10) Block Group 530219801001; including Census Blocks 000, 001, 002, 003, 004, 005, 006, 007, 008, 009, 010, 011, 012, 013, 014, 015, 016, 017, 018, 019, 020, 021, 022, 023, 024, 025, 026, 027. [Ord. 4346, 2017; Ord. 4315, 2016; Code 1970 § 1.10.040.]

1.15.050 District four.

~~Voting district four shall encompass the area within the City of Paseo comprised of precinct numbers 40, 45, 46, 47, 50, 51, 52, 53, 54, and 55, as those precincts are described on the maps and property descriptions on file with the Auditor of Franklin County.~~ is comprised of the following Census Block Groups and Census Blocks:

(1) Block Group 530210206031; including Census Block 000; and

(2) Block Group 530210206052; including Census Blocks 000, 001, 002, 003, 004, 005, 006, 007, 008, 009, 010, 011, 012, 013, 014, 015, 016, 017, 018, 019, 020, 021, 022, 023, 024, 026; and

(3) Block Group 530210206061; including Census Blocks 000, 001, 002, 003, 004, 005, 006, 007, 008, 009, 010, 011, 012, 013, 014, 015, 016, 017, 018; and

(4) Block Group 530210206062; including Census Blocks 000, 001, 002, 003, 004, 005, 006, 007, 008, 009, 010, 011, 012, 013, 014, 015, 016, 017, 018, 019, 020, 021, 022, 023, 024, 025, 026, 027, 028; and

(5) Block Group 530210206064; including Census Blocks 000, 001, 002, 003, 004, 005, 006, 007, 008, 009, 010, 011, 012, 013, 014, 015, 016, 017, 018, 019, 020, 021, 022, 023, 024, 025, 026, 027, 028, 029, 030, 031, 032, 033, 034, 035, 036, 037, 038, 039; and

(6) Block Group 530210206072; including Census Blocks 000, 001, 002, 003, 004, 005, 006, 007, 008, 009, 010, 011, 012, 013, 014, 015, 016, 017, 018, 019, 020, 021, 022, 023, 028, 029; and

(7) Block Group 530210206082; including Census Blocks 049, 050, 054, 056, 057, [Ord. 4346, 2017; Ord. 4315, 2016; Code 1970 § 1.10.050.]

1.15.060 District five.

~~Voting district five shall encompass the area within the City of Pasco comprised of precinct numbers 19, 20, 21, 25, 26, 27, 28, 29, 30, 31, 36, 41, 48, 49, 56, 57, 58, 59, 60, 62, 63, 65, 66 and 67, as those precincts are described on the maps and property descriptions on file with the Auditor of Franklin County;~~ is comprised of the following Census Block Groups and Census Blocks:

(1) Block Group 530210205011; including Census Blocks 000, 002, 003, 007, 009, 021, 022, 023, 024, 025, 026, 028, 029, 030, 031; and

(2) Block Group 530210205012; including Census Blocks 000, 001, 002, 003, 004, 005, 006, 007, 008, 009, 010, 011, 012, 013, 014, 015; and

(3) Block Group 530210205013; including Census Blocks 000, 001, 002, 003, 004, 005, 006, 007, 008, 009, 010, 011, 012, 013, 014, 015, 016; and

(4) Block Group 530210205014; including Census Blocks 000, 001, 002, 003, 004, 005, 006, 007, 008, 009, 010, 011, 012, 013, 014, 015, 016, 017, 018, 019, 020, 021, 022, 023, 024, 025, 026, 027, 028, 029, 030, 031, 032, 033; and

(5) Block Group 530210205032; including Census Blocks 004, 005, 006, 007, 008, 009, 010; and

(6) Block Group 530210205033; including Census Blocks 000, 001, 002, 004, 005; and

(7) Block Group 530210205042; including Census Blocks 003, 005, 006, 010, 011, 012, 013, 014, 019, 020, 021, 027, 028, 029, 030, 031, 033, 035; and

(8) Block Group 530210205043; including Census Blocks 011, 014, 015, 016, 017, 018; and

(9) Block Group 530210206031; including Census Blocks 001, 002, 003, 004, 005, 006, 007, 008, 009, 010, 011, 012, 013, 014, 015, 016, 017, 018, 019, 020, 021, 022, 023, 024, 025, 026,

027, 028, 029, 030, 031, 032, 033, 034, 035, 036, 037, 038, 039, 040, 041, 042, 043, 044, 045, 046, 047; and

(10) Block Group 530210206032; including Census Blocks 000, 001, 002, 003, 004, 005, 006, 007, 008, 009, 010, 011, 012, 013, 014; and

(11) Block Group 530210206063; including Census Blocks 000, 001, 002, 003, 004, 005, 006, 007, 008, 009, 013, 014, 015, 019, 020, 021, 022, 023, 024, 025, 026, 027, 028. [Ord. 4346, 2017; Ord. 4315, 2016; Code 1970 § 1.10.060.]

1.15.070 District six.

~~Voting district six shall encompass the area within the City of Pasco comprised of precinct numbers 4, 6, 7, 11, 12 and 16, as those precincts are described on the maps and property descriptions on file with the Auditor of Franklin County.~~ is comprised of the following Census Block Groups and Census Blocks:

(1) Block Group 530210201011; including Census Blocks 000, 001, 002, 003, 004, 005, 006, 007, 008, 009, 010, 011, 012, 013, 014, 015, 016, 018, 019, 020, 021, 033, 078, 079, 080, 081, 082, 083, 084; and

(2) Block Group 530210201021; including Census Blocks 044, 048; and

(3) Block Group 530210201022; including Census Blocks 008, 009, 010, 015, 016, 017, 018, 019, 021, 022, 023; and

(4) Block Group 530210201023; including Census Blocks 011, 012, 025, 026, 027; and

(5) Block Group 530210201031; including Census Blocks 006, 007, 008, 009, 010, 011, 012, 013, 014, 015, 016, 017, 018, 019, 020, 021; and

(6) Block Group 530210201032; including Census Blocks 000, 001, 002, 003, 004, 005, 006, 007, 008, 009, 010, 011, 012; and

(7) Block Group 530210202011; including Census Blocks 000, 001, 002, 003, 004, 005, 006, 007, 008, 009, 010, 011, 012, 013, 014, 016, 017, 022, 023; and

(8) Block Group 530210202012; including Census Blocks 000, 001, 002, 003, 004, 005, 006, 007, 008, 009, 010; and

(9) Block Group 530210202021; including Census Blocks 001, 003, 010, 011, 012, 013, 018, 019, 020, 021, 022, 023; and

(10) Block Group 530210202022; including Census Blocks 000, 001, 002, 003, 004, 005, 006, 007, 008, 009, 010, 011, 012, 013, 014, 015, 016, 017, 018, 019, 020, 021, 022, 023, 024, 025, 026, 027, 028, 029, 030, 031, 032, 033, 034, 035, 036, 037; and

(11) Block Group 530210204021; including Census Blocks 008, 009, 010, 011; and

(12) Block Group 530210204031; including Census Blocks 000, 001, 002, 003, 004, 005, 006, 007, 008, 009, 010, 011, 012, 013, 014, 015, 016, 017, 018, 019, 020, 021, 022, 023, 024, 025, 026, 027, 028; and

(13) Block Group 530210204032; including Census Blocks 000, 001, 002, 003, 004, 005, 006, 007, 008, 009, 010, 011, 012, 013, 014; and

(14) Block Group 530210204041; including Census Blocks 000, 001, 002, 003, 004, 005, 009, 010, 011, 012, 014; and

(15) Block Group 530210204042; including Census Blocks 000, 001, 002, 003, 004; and

(16) Block Group 530210205044; including Census Blocks 000, 001, 002, 003, 004, 005, 006, 007, 008, 009, 010, 011, 012, 013, 014, 015, 016, 017, 018, 019, 020, 021, 022, 023, 024, 025.
[Ord. 4346, 2017; Ord. 4315, 2016; Code 1970 § 1.10.070.]

1.15.080 Election of Councilmembers and Councilmembers-at-large.

The qualified electors of each voting district, and they only, shall nominate from among their number candidates for the office of Councilmember of such voting district to be voted for at the following general election. Such candidates shall be nominated in the same manner as other candidates at the primary election held on the date specified in RCW 29A.04.311. In addition, one Councilmember, designated Councilmember-at-large, shall be nominated from among all districts within the City. Each Council position shall be numbered one through six corresponding to the district number with the at-large candidate being designated as position seven. The two candidates having the highest vote totals for each Council position shall be certified as having been nominated and shall run for that position in the general election. District Councilmembers shall be elected by all of the qualified voters of the District and the Councilmember-at-large shall be elected by all of the qualified voters of the City and the person receiving the highest number of votes for the office of Councilmember for the position for which he or she is a candidate shall be declared duly elected. [Ord. 4315, 2016; Code 1970 § 1.10.080.]

1.15.090 Councilmembers – Residential requirement and/or removal.

Councilmembers elected from districts shall be residents of the district from which they are elected. Removal of a Councilmember from the district from which he or she was elected shall create a vacancy in that office; provided, that no change in the boundaries of districts shall affect the term of any Councilmember, but he or she shall serve out his or her term in the district of their residence at the time of their election. [Ord. 4315, 2016; Code 1970 § 1.10.090.]

1.15.100 Re-establishment of district boundaries.

In addition to decennial census adjustments required by RCW [29A.76.010](#), the Council shall reestablish district boundaries whenever the population in any district exceeds by 10 percent or more the population in any other district; provided, that no change in the boundaries of any district shall be made within 90 days next before the date of a general municipal election, nor within 12 months after the districts have been established or altered. [Ord. 4315, 2016; Code 1970 § 1.10.100.]

1.15.110 Annexation.

When additional territory is added to the City, it may, by act of the City Council, be annexed to contiguous districts or attached to any other district as the Council may determine without affecting the right to redistrict at the expiration of 12 months after the last previous division. [Ord. 4315, 2016; Code 1970 § 1.10.110.]

1.15.120 Recall petitions.

Any registered voter shall be eligible to sign a petition for the recall of any Councilmember. [Ord. 4315, 2016; Code 1970 § 1.10.120.]

1.15.130 Filling vacancies.

If a vacancy in the Council occurs or if a district office is not filled by the election process, the remaining members of the City Council shall appoint a person to fill such office until the next regular general municipal election, at which time a person shall be elected to serve for the remainder of the unexpired term. Persons appointed to fill district offices shall be the residents of that district. [Ord. 4315, 2016; Code 1970 § 1.10.130.]

Section 2. Final Ordinance. City staff is hereby directed to complete preparation of the final Ordinance, including correction of any typographical or scrivener's errors.

Section 3. This Ordinance shall take effect five (5) days after approval, passage and publication as required by law.

PASSED by the City Council of the City of Pasco, Washington, this 5th day of December, 2022.



Blanche Barajas
Mayor

ATTEST:



Debra Barham, CMC
City Clerk

APPROVED AS TO FORM:



Kerr Ferguson Law, PLLC
City Attorneys

Published:

Sunday, December 11, 2022

(EXCLUDING ANNEXATION SINCE APRIL 1, 2020 - HATCHED AREAS)

VOTING PRECINCTS

PRECINCT 1

West edge of railroad along North 4th Avenue (which becomes east edge of North 4th Avenue); City of Pasco boundary between North 4th Avenue and North Railroad Avenue; North Railroad Avenue; boundary of Pasco annexation by Ordinance 3107 of 1995 between Railroad Avenue and U. S. Highway 395; U. S. Highway 395 (east edge); north boundary of Pasco annexation by Ordinance 1078 of 1963; east boundary of City of Pasco; Pasco-Kahlotus Road; North Commercial Avenue; east and south boundaries of Public Land Survey Section 21-9-30 (within the interchange area between U. S. Highway 12 and Pasco-Kahlotus Road); U. S. Highway 12 (starting with westbound lanes, switching to eastbound lanes east of Highland Street); North Oregon Avenue, offramp from Interstate 182 east to North Oregon Avenue; eastbound lanes of Interstate 182.

PRECINCT 2

East A Street; Anaconda Avenue; East Helena Street; Heritage Boulevard; the offramp from Heritage Boulevard to East Lewis Street; East Lewis Street; North Cedar Avenue; East Adelia Street; North Owen Avenue; East Parkview Boulevard; Madrona Avenue; the lot line between Lots 13 and 14 in the Broadway Place Phase 5 subdivision, extending through a curve to the westbound lanes of U. S. Highway 12; westbound lanes of U. S. Highway 12; south and east boundaries of Public Land Survey Section 21-9-30 (within the interchange area between U. S. Highway 12 and Pasco-Kahlotus Road); North Commercial Avenue; Pasco-Kahlotus Road; east boundary of the City of Pasco between Pasco-Kahlotus Road and the intersection of Tank Farm Road with U. S. Highway 12; Sacajawea Park Road; East Ainsworth Avenue; railroad between Ainsworth Avenue and Commerce Street (with a slight jog to the intersection of East Dock Street and Southeast Road 27); East Dock Street;

VOTING PRECINCTS

Southeast Road 18; southern railroad between Dock Street and Ainsworth Avenue (with a slight jog to the intersection of East Ainsworth Avenue and Public Land Survey Section 33-9-30); Public Land Survey Section 33-9-30 (following the east boundary of Steffin's Second Addition and the west boundary of Gill and Whitson Addition); west edge of the main railroad in Pasco.

PRECINCT 3

North Oregon Avenue; eastbound lanes of U. S. Highway 12 (jogging southwest and south along west boundary of the Broadway Place subdivision); north boundary of the Highland Park Homes subdivision; East Sheppard Street; East Salt Lake Street; North Utah Avenue; East Superior Street.

PRECINCT 4

West Bonneville Street; North 4th Avenue; West Shoshone Street; North Tacoma Avenue; Lewis Street underpass; the east edge of the main railroad in Pasco; East Clark Street; East Alvina Street; North Beech Avenue; East Adelia Street; North Cedar Avenue; East Lewis Street; offramp from Heritage Boulevard to East Lewis Street; Heritage Boulevard; East Helena Street; Anaconda Avenue; East A Street; South 4th Avenue; former South Street (vacated by Pasco Ordinance 2322 of 1981); South 5th Avenue; West Columbia Street; South 6th Avenue; North 6th Avenue; West Clark Street; North 7th Avenue.

VOTING PRECINCTS

PRECINCT 5

Eastbound lanes of Interstate 182; offramp from eastbound Interstate 182 to North Oregon Avenue; East Superior Street; North Utah Avenue; East Spokane Street; North California Avenue; East Broadway Street; North Wehe Avenue; East Parkview Boulevard; North Owen Avenue; East Adelia Street; North Beech Avenue; East Alvina Street; East Clark Street; east edge of the main railroad in Pasco; Lewis Street underpass; North Tacoma Avenue; West Shoshone Street; North 4th Avenue; West Court Street; North 9th Avenue (jogging to east edge of 9th Avenue, then to north edge of Lincoln Drive); the boundary between Lots 7 & 8 in the Wendell Brown Addition of Pasco.

PRECINCT 6

West Court Street; North 4th Avenue; north edge of West Sylvester Street; west edge of North 8th Avenue; north edge of West Park Street; North 14th Avenue.

PRECINCT 7

North edge of West Park Street; west edge of North 8th Avenue; north edge of West Sylvester Street; North 4th Avenue; West Bonneville Street; North 11th Avenue; West Hopkins Street; North 14th Avenue.

PRECINCT 8

City of Pasco boundary north of the Tri-Cities Airport; east edge of North 4th Avenue; eastbound lanes of Interstate 182; west edge of Road 36 (jogging to centerline at the south edge of Argent Place); east boundary of the Desert Estates 3 Phase 8 subdivision; west boundary of the Tri-Cities Airport to the City of Pasco boundary.

VOTING PRECINCTS

PRECINCT 9

Eastbound lanes of Interstate 182; the boundary between Lots 7 & 8 in the Wendell Brown Addition of Pasco; north edge of Lincoln Drive, jogging to the east edge of North 9th Avenue and then to the centerline of Lincoln Drive; North 9th Avenue; West Court Street; North 14th Avenue.

PRECINCT 10

Eastbound lanes of Interstate 182; North 14th Avenue; West Court Street; North 18th Avenue.

PRECINCT 11

West Court Street; North 14th Avenue; south edge of West Henry Street; west edge of North 16th Avenue; south edge of West Octave Street; east edge of North 18th Avenue; south edge of West Margaret Street; east edge of North 20th Avenue.

PRECINCT 12

South edge of West Margaret Street; east edge of North 18th Avenue; south edge of West Octave Street; west edge of North 16th Avenue; south edge of West Henry Street; North 14th Avenue; West Shoshone Street; North 20th Avenue (jogging to east edge at Sylvester Street).

PRECINCT 13

West Shoshone Street; North 14th Avenue; West Hopkins Street; North 11th Avenue; West Bonneville Street; North 7th Avenue; West Clark Street; North and South 6th Avenue; West

VOTING PRECINCTS

Columbia Street; South 5th Avenue; former South Street (vacated by Pasco Ordinance 2322 of 1981); South 4th Avenue; West and East A Street; west edge of the main railroad in Pasco; Public Land Survey Section 33-9-30 (following the east boundary of Steffin's Second Addition and the west boundary of Gill and Whitson Addition); north edge of East Ainsworth Avenue; Ainsworth Avenue overpass between South 2nd Avenue and the 4th Avenue underpass loop; West Ainsworth Avenue; South 10th Avenue (to the Cable Bridge); the Columbia River; South 20th Avenue, jogging to the east edge at the south edge of West A Street, then back to the centerline of South and North 20th Avenue at Lewis Street; North 20th Avenue.

PRECINCT 14

Eastbound lanes of Interstate 182; North 18th Avenue; West Court Street; North 20th Avenue.

PRECINCT 15

Eastbound lanes of Interstate 182; North 20th Avenue; alley at north boundary of the Replat of Blocks 1 & 2 of the Sprouse Addition in Pasco; North 22nd Avenue; West Pearl Street; North 24th Avenue; West Court Street; east edge of Road 32; south edge of West Pearl Street (between Road 32 & 30); east edge of Road 30; north edge of West Ella Street; west edge of Road 34; West Pearl Street between Road 34 & 36 (jogging to south edge at Road 35); west edge of Road 36.

VOTING PRECINCTS

PRECINCT 16

Southbound lanes of U. S. Highway 395; West Court Street; North 24th Avenue; West Ruby Street; North 22nd Avenue; West Agate Street; North 20th Avenue (jogging from centerline to east edge at Court Street); West Sylvester Street.

PRECINCT 17

Southbound lanes of U. S. Highway 395; West Sylvester Street; North 20th Avenue; West Lewis Street.

PRECINCT 18

Southbound lanes of U. S. Highway 395; West Lewis Street; South 20th Avenue; Columbia River.

PRECINCT 19

South edge of West Pearl Street (jogging to centerline at Road 35); west edge of Road 34; north edge of West Ella Street; east edge of Road 30; south edge of West Pearl Street between Road 30 & 32; east edge of Road 32; West Court Street; west edge of Road 36 (jogging to east edge at the south boundary of the Parkhurst Addition subdivision).

PRECINCT 20

Road 36 (jogging to the east edge of Road 36 at the Bernice Second Addition subdivision, then to the west edge at West Henry Street); West Court Street; southbound lanes of U. S. Highway 395; West Sylvester Street.

VOTING PRECINCTS

PRECINCT 21

Southbound lanes of U. S. Highway 395; West Sylvester Street; Road 36; Columbia River.

PRECINCT 26

City of Pasco boundary at the west and north boundaries of the Riverview Professional Center Condominium subdivision; west edge of Road 44; City of Pasco boundary between Road 44 & Road 40 north of Pearl Street; east edge of Road 40; south edge of West Pearl Street; east edge of Road 36 (jogging to west edge at the south boundary of the Irene's Addition subdivision); West Court Street.

PRECINCT 27

West Court Street; west edge of Road 36; north edge of West Henry Street; Road 44.

PRECINCT 28

North edge of West Henry Street, jogging to the south edge and then to the east edge of Road 36; east edge of Road 36; West Sylvester Street; east edge of Road 40.

PRECINCT 29

West Sylvester Street; east edge of Road 36; Columbia River; west edge of Road 40.

PRECINCT 30

North edge of West Henry Street; east edge of Road 40; West Sylvester Street; Road 44.

VOTING PRECINCTS

PRECINCT 31

South edge of West Sylvester Street, jogging to centerline at Road 44; west edge of Road 40; Columbia River; west boundary of the Klopfenstein and Replat of Klopfenstein subdivisions.

PRECINCT 36

Road 52; West Sylvester Street; Road 50; City of Pasco boundary between West Octave Street and West Court Street; City of Pasco boundary that includes any right-of-way within Pasco's jurisdiction; Road 44; south edge of West Sylvester Street; east boundary of the Bailie subdivision; Columbia River.

PRECINCT 39

Road 68; Rodeo Drive; Convention Place; Burden Boulevard, jogging to north edge at Road 60; east boundaries of the Reilynn Park and Linda Loviisa Division 2 (Phases 1, 3, 5, & 9) subdivisions; south edge of the Interstate 182 right of way.

PRECINCT 40

Chapel Hill Boulevard; Churchill Downs Lane; Thistledown Drive; Saratoga Lane; north edge of the Franklin County Irrigation District main canal; east boundary of Binding Site Plan 2006-06; north edge of West Argent Road; City of Pasco boundary between Road 64 & Road 72, south of Argent Road; east boundary of the Chiawana Place Phase 2 subdivision; south boundary of the Valley View Addition subdivision; west edge of Road 68, jogging to the centerline at the north boundary of the Valley View Addition; excluding the parcel bounded by Short Plats 2001-09, 2019-24, & 2023-01.

VOTING PRECINCTS

PRECINCT 41

East edge of Road 68 south of Court Street; north edge of West Court Street; east edge of Road 72; City of Pasco boundary between Road 72 & 68; east edge of Road 68 north of Pearl Street; north boundary of Short Plat 2013-21; north edge of West Pearl Street; Road 64, jogging to the east edge at Short Plat 2012-10; south boundary of the Lamb Estates subdivision; Road 62; south boundary of Short Plat 2017-13; Road 60; West Sylvester Street; east edge of Road 52, Columbia River.

PRECINCT 42

North edge of Sandifur Parkway; west edge of Grant Lane; south edge of Wrigley Drive; east boundary of Lincoln Park; east boundary of the Village at Pasco Heights Phase 1 subdivision; north edge of Burden Boulevard; Road 60.

PRECINCT 43

North edge of Sandifur Parkway; Road 60; Wrigley Drive; east edge of Convention Drive.

PRECINCT 44

Wrigley Drive; Road 60; Burden Boulevard; east edge of Convention Drive.

PRECINCT 45

Road 84; Burns Road; Road 68; Three Rivers Drive; Chehalis Drive; Okanogan Lane; Hudson Drive.

VOTING PRECINCTS

PRECINCT 46

North edge of Sandifur Parkway; Convention Drive (starting at east edge, jogging to centerline at Burden Boulevard); Rodeo Drive; Road 68; offramp from Interstate 182 eastbound to Road 68; eastbound lanes of Interstate 182; west boundaries of Island Estates Phase 1-3 subdivisions (extended to Interstate 182 eastbound lanes).

PRECINCT 47

Eastbound lanes of Interstate 182; offramp from eastbound Interstate 182 to Road 68; Road 68; north boundary of the Valley View Addition subdivision; east boundaries of the Sorano Heights Phase 1 and Chiawana Place Phase 2 subdivisions; south boundary of West Argent Road; west boundary of Road 84.

PRECINCT 48

Road 76; north boundary of the Ter-Ray Estates subdivision; City of Pasco boundary between the northeast corner of Ter-Ray Estates and Wernett Road; south edge of Wernett Road; east edge of Road 72; north edge of West Court Street; east edge of Road 68; Columbia River.

PRECINCT 49

East boundary of Short Plat 2000-17; jogging along south edge of Court Street to east edge of Road 100, then to north edge of Court Street; north edge of West Court Street, jogging to east edge of Road 84; north boundary of the Back Road Country Estates subdivision; Road 80; north boundary of Short Plat 1992-10; west and south boundaries of Short Plat 1995-09; east edge of Road 76, jogging to the centerline at Ter-Ray Estates; Columbia River.

VOTING PRECINCTS

PRECINCT 50

West and north boundaries of Short Plat 2016-14; north boundary of Short Plat 2020-22; Broadmoor Boulevard; north boundaries of the Columbia Terrace Phase 1, Short Plat 2019-08, and Seven Sisters subdivisions; east boundary of the Seven Sisters subdivision; north boundaries of the Desert Sage and Sage Flats subdivisions; Road 68 North; and Burns Road (changing to the south edge of Burns Road at the rightward curve west of Road 90).

Subprecinct 50.01

Road 108 (both existing and proposed extension to the City of Pasco boundary at the north boundary of Short Plat 2020-22); north boundary of Short Plat 2020-22; Broadmoor Boulevard; north boundaries of the Columbia Terrace Phase 1, Short Plat 2019-08, and Seven Sisters subdivisions; east boundary of the Seven Sisters subdivision; north boundaries of the Desert Sage and Sage Flats subdivisions; Road 68 North; and Burns Road (changing to the south edge of Burns Road at the rightward curve west of Road 90).

Subprecinct 50.02

West and north boundaries of Short Plat 2016-14; Road 108 (both existing and proposed extension to the City of Pasco boundary at the north boundary of Short Plat 2020-22); south edge of Burns Road.

PRECINCT 51

East edge of Broadmoor Boulevard; Sandifur Parkway; west boundaries of Island Estates Phase 1-3 subdivisions (extended to Interstate 182 eastbound lanes); south edge of Interstate 182 right-of-way.

VOTING PRECINCTS

PRECINCT 55

South edge of Burns Road; east boundaries of the Broadmoor Estates Phase 3 and Mediterranean Villas Phase 5 subdivisions; west edge of Road 92; Sandifur Parkway; Broadmoor Boulevard.

PRECINCT 58

Burns Road, from centerline to south edge at the east edge of Dent Road; Broadmoor Boulevard; south edge of Interstate 182 right of way, crossing to the north edge of this right of way and to the south edge of Harris Road along the south boundary of the City of Pasco Northwest annexation established by Ordinance 2388 of 1981; south edge of Harris Road; east edge of West Court Street, extending southward to the Columbia River along the City of Pasco boundary; Columbia River; City of Pasco boundary along the south boundaries of Short Plat 1995-28 and the south and east boundaries of Short Plat 2022-32 (also bounding the Solstice subdivision).

PRECINCT 61

Unincorporated part of Franklin County surrounded by the City of Pasco boundary between the east edge of Road 52 and Road 40, excluding the unincorporated part of Franklin County bounded by the south edge of West Argent Place, the east edge of Road 40, West Argent Road, and Road 44.

PRECINCT 62

Road 60; north boundary of Short Plat 1976-09; south boundary of Short Plat 1997-04; west edge of Road 57; west boundary of Bosch Estates subdivision; south edge of West

VOTING PRECINCTS

Argent Road between Bosch Estates and Road 60; west edge of Road 60; south boundaries of the Shaundee Estates and Quail Run subdivisions; east edge of Road 64 (jogging to centerline at south edge of Argent Road); north edge of West Argent Road between Road 64 and Binding Site Plan 2006-06; east boundary of Binding Site Plan 2006-06; north edge of Franklin County Irrigation District main canal; northward extension of Road 52; north edge of West Argent Road between Road 52 and Bosch Estates 2; east boundary of the Bosch Estates 2 subdivision; West Dradie Street; east boundary of the River Hill Addition subdivision; Richardson Road (jogging to the south edge east of the Road 54 right-of-way); west edge of Road 52; City of Pasco boundary between Road 52 and Road 56 (which includes the north boundary of Short Plat 1980-09 and the east and north boundaries of Short Plat 1979-02); City of Pasco boundary along the right-of-way edges of Road 56, the north and east boundaries of the Bales Place subdivision, and the west boundary of Short Plat 1988-03; south edge of Agate Street; east edge of Road 52; north boundary of Short Plat 1991-06; north edge of West Henry Street; Road 50; and West Sylvester Street.

PRECINCT 63

East edge of Road 64 (jogging to the centerline at the north boundary of Short Plat 2012-10); north edge of West Pearl Street (extending between Buttercreek Estates and Canter Club Estates to the east edge of Road 68); east edge of Road 68; south edge of Richardson Road; Road 60; south boundary of Short Plat 2017-13; Road 62; south boundary of the Lamb Estates subdivision.

VOTING PRECINCTS

PRECINCT 70

East edge of the north-south segment of Dent Road; Fraser Road; City of Pasco boundary extending north from the north boundary of the Kohler Estates subdivision and east to Richview Drive; east edge of Richview Drive; north boundary of Short Plat 1993-01; east edge of Easy Street; City of Pasco boundary between Easy Street and Columbia River Road; east edge of Columbia River Road; south edge of Clark Road; west boundary of Short Plat 2020-31, extending southward to Kau Trail Road; north edge of Kau Trail Road; east edge of Road 70 North; east boundary of the Dickenson Addition subdivision; city boundary between the northeast corner of Dickenson Addition to Road 68 North; east edge of Road 68 North; north boundaries of the Sage Flats and Desert Sage subdivisions; east and north boundaries of the Seven Sisters subdivision; north boundaries of Short Plat 2019-08 and the Columbia Terrace Phase 1 subdivision; Broadmoor Boulevard (jogging west to the northeast corner of Short Plat 2020-22); east edge of Iris Lane; south edge of the east-west segment of Dent Road; east and south boundaries of Short Plat 2009-16.

PRECINCT 73

Columbia River; extension of the north edge of the Esquatzel Canal outflow; east edge of Columbia River Road; north and west boundary of the City of Pasco between Columbia River Road and an extension of Fraser Road (also the boundary between Ranges 28 & 29 East of the Public Land Survey System); Fraser Road; east edge of Dent Road; Burns Road; City of Pasco boundary along the boundaries of Short Plats 1995-28 and 2022-32.

VOTING PRECINCTS

PRECINCT 102

Road 68; south edge of Interstate 182; east boundary of the Chapel Ridge subdivision; north edge of the Franklin County Irrigation District main canal; Saratoga Lane; Thistledown Drive; Churchill Downs Lane; Chapel Hill Boulevard.

PRECINCT 106

North California Avenue; East Spokane Street; North Utah Avenue; East Salt Lake Street; East Sheppard Street; north boundary of the Highland Park Homes subdivision; west boundary of the Broadway Place subdivision (jogging northeast to eastbound lanes of U. S. Highway 12); eastbound lanes of U. S. Highway 12; extension from U. S. Highway 12 through a curve along the lot line between Lots 13 and 14 in the Broadway Place Phase 5 subdivision to Madrona Avenue; Madrona Avenue; East Parkview Boulevard; North Wehe Avenue; East Broadway Street.

PRECINCT 114

North 20th Avenue; alley at north boundary of the Replat of Blocks 1 & 2 of the Sprouse Addition in Pasco; North 22nd Avenue between this alley and Pearl Street; West Pearl Street; North 24th Avenue; West Ruby Street; North 22nd Avenue between Ruby and Agate Streets; West Agate Street.

PRECINCT 117

South edge of West Argent Place; east edge of Road 40; West Argent Road; Road 44.

VOTING PRECINCTS

PRECINCT 118

The Archer Estates subdivision (Phases 1 & 2), including Burns Road to the City of Pasco boundary to the south.

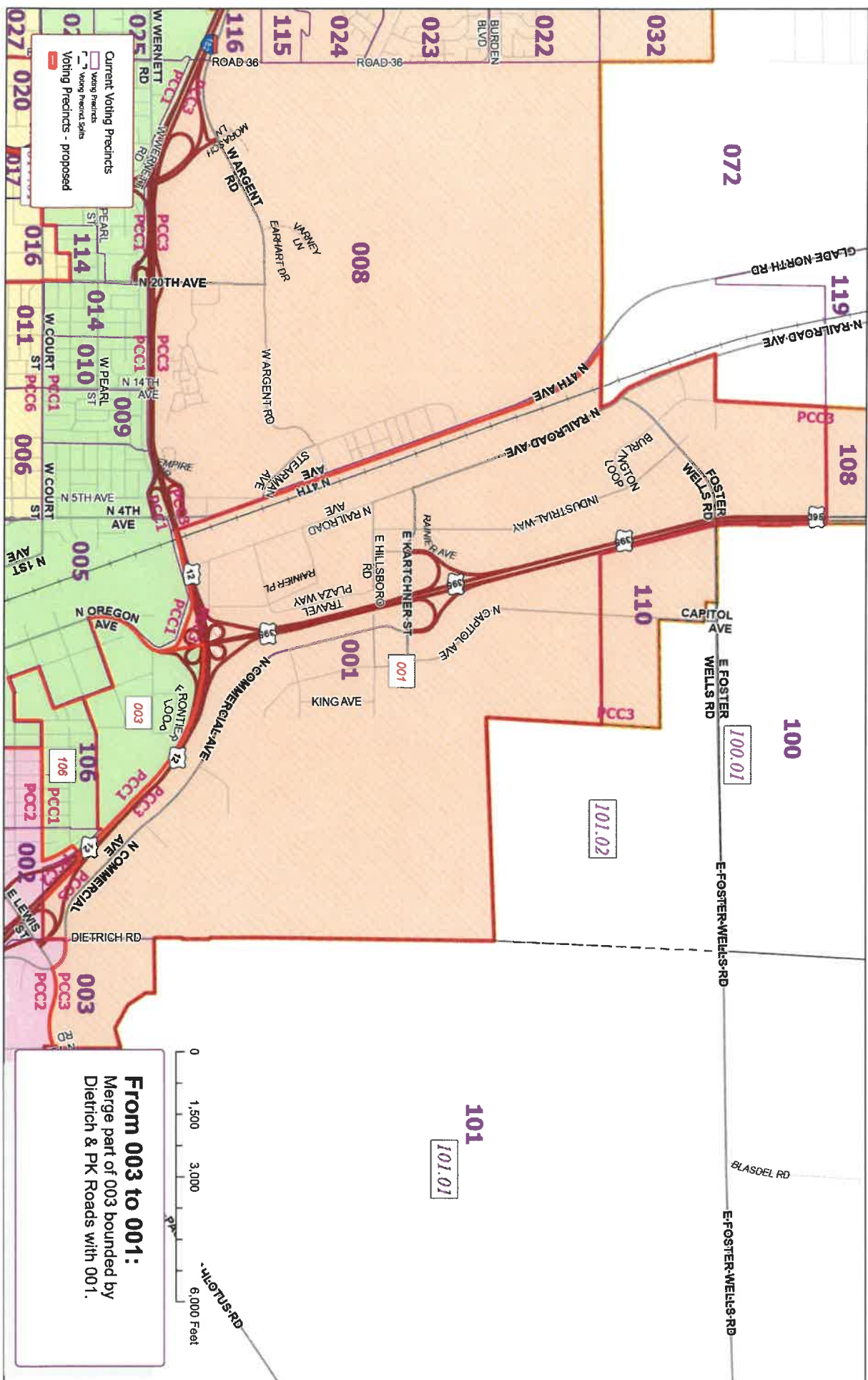
PRECINCT 122

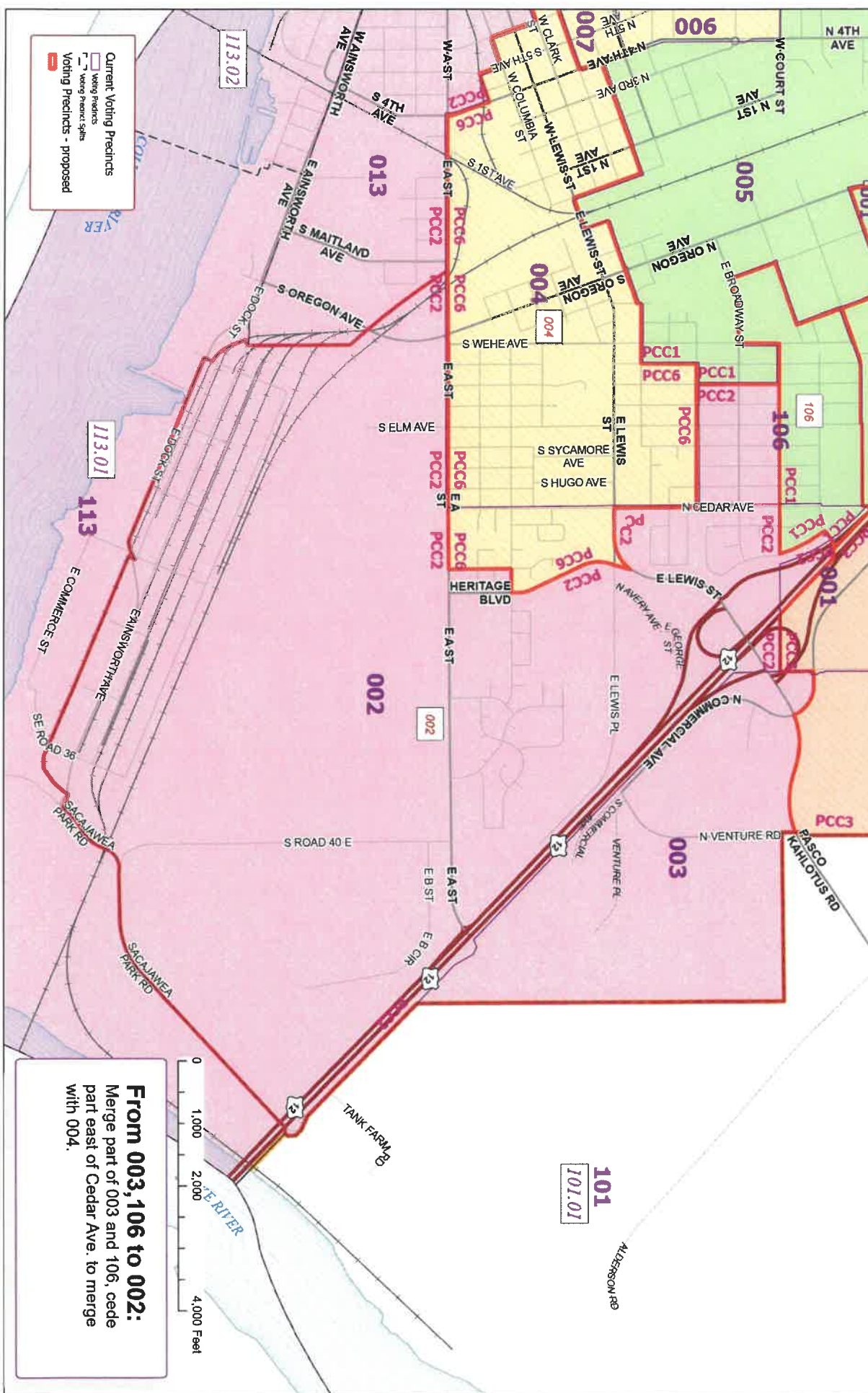
Road 84; Hudson Drive; Okanogan Lane; Chehalis Drive; Three Rivers Drive; Road 68; Burns Road; Convention Drive; north edge of Sandifur Parkway.

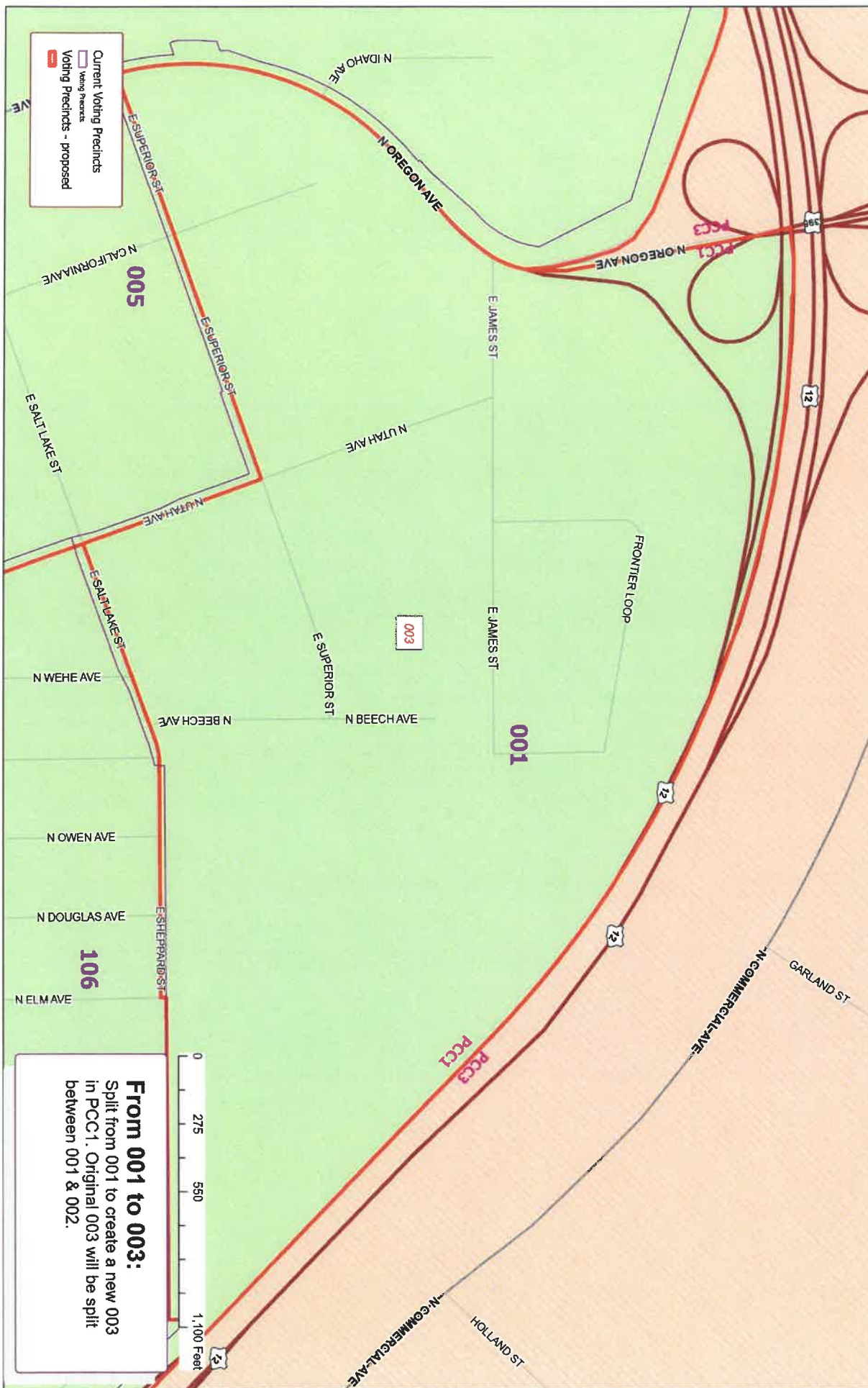
PRECINCT 123

West edge of Road 92; east boundaries of the Mediterranean Villas Phase 5 and Broadmoor Estates Phase 3 subdivisions; Burns Road; Road 84; Sandifur Parkway.

Some voting precinct boundaries will change only slightly to better align with new city council districts as defined by the City of Pasco on 12/5/2022. These small boundary changes would not include new populations or registered voters. Voting precincts with these slight boundary changes include Precincts 5-15, 19, 26-31, 39-44, 47-49, 55, 58, 61, 63, 73, 114, 117, & 118. Their boundary descriptions are included in this document, and will be included in the official voting precinct map record, but are not shown in map pages in this document.







From 001 to 003:
Split from 001 to create a new 003
in PCC1. Original 003 will be split
between 001 & 002.

